

**Door Maker Suite
Version 1.0.39 Pro / Gold**



Table of Contents

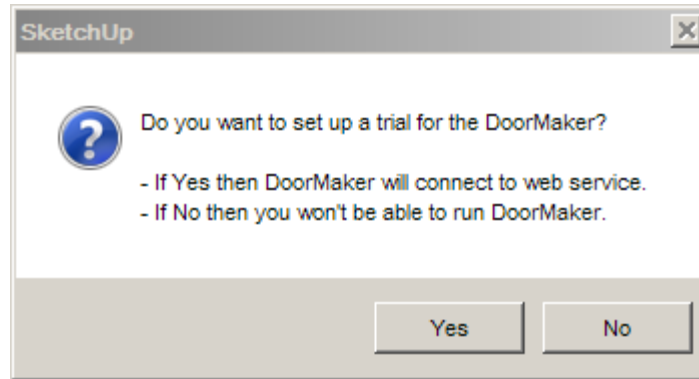
Door Maker Suite Version 1.0.39 Pro / Gold	1
1 Setup	5
2 Introduction	7
Tool Bar Buttons	7
Menu Options	7
Edit Config	8
Host	8
Service	8
Translate Parts	8
Language	8
Debug Level	9
Force Silhouettes Off	9
Small Fonts	9
Extra Space	9
3 Gold Features	10
4 Maple Door examples	11
5 Some Door Examples with Mullions – Gold Version	13
6 Mitered Door Examples	14
7 Passage Door Examples	15
8 Various Door Jamb Examples – Gold	16
Double Entry Doors with Astragal and side-lights. 120 degree Hinge Angle.	16
Wide Passage Door with pivot point	16
Double Bifold	17
Single Bifold	17
9 Door Maker Web Dialog – Gold	18
10 Door Maker Web Dialog – Pro	19
11 Door Maker Web Dialog – Pro with small fonts	20
Door Style	21
Door Material	21
Door Shape	21
Wood Grain	22
Tool Option	23
Door Gap	25
Door Protrusion	25
Force Silhouettes Off	25
Stile Width	25
Middle Section Height	26
Bottom Section Height	26
Top Rail Width	26

Lock Rail Width	26
Bottom Rail Width	26
Door Width	26
Door Height	26
Door Angle	26
Door Thickness	27
Door Panel Thickness	27
Center Shaker Panel	27
Half Width Stile	27
Swing Layer	27
Handle Location	27
Offset From Location	28
Handle Style	28
Second Handle	28
Click Action	28
Hinge Angle	28
Pivot Point	28
Pullout Depth	29
Layer Number	29
Door Panel Profile	29
Stile Profile	29
Door Front Edge Profile	29
Door Back Edge Profile	30
Mitered Profile	30
Cabinet Number	30
Open Style Sheet	31
Save Style Sheet	31
12 Door Maker Web Dialog – Gold second Tab	32
Door Jambs	32
Astragals	32
Jamb Thickness	32
Rabbet Thickness	32
Raise Door In Jamb	32
Wall Thickness	33
Rough Opening	33
Left Side-light Width	33
Right Side-light Width	33
Side-light Extra Width	33
Mullions Top Section	33
Mullions Middle Section	33
Mullions Bottom Section	34
Width Mullions etc	34
13 Additional Notes	35
14 Defaults.txt	36
15 Config.txt	37

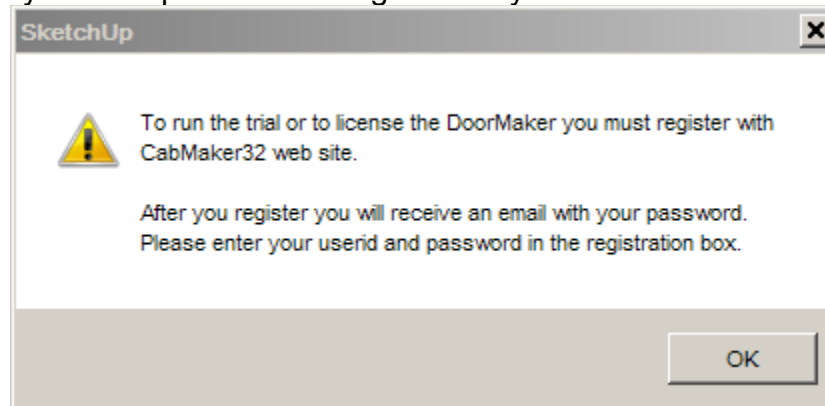
16 Door Maker Options	38
17 Files and File Locations	39
18 Adding Profiles	42
Add Door Profile	43
Selecting a Profile	43
Selecting a Mitered Profile	44
Naming a Profile	44
Saving a Profile	45
Restart after Saving a Profile	46
19 Version History	47
Version 1.0.39 – Jan 2, 2015	47
Version 1.0.38 – Dec 23, 2014	47
Version 1.0.37 – Dec 20, 2014	47
Version 1.0.36 – Dec 17, 2014	47
Version 1.0.34 – Oct 9, 2014	47
Version 1.0.33 – Sep 6, 2014	47
Version 1.0.32 – Aug 3, 2014	48
Version 1.0.31 – Jul 24, 2014	48
Version 1.0.30 - Jul 17, 2014	48
Version 1.0.29 - Jun 11, 2014	48
Version 1.0.28 - Jun 7, 2014	48
Version 1.0.27 - Jun 4, 2014	48
Version 1.0.26 - May 13, 2014	48
Version 1.0.25 - Apr 19, 2014	48
Version 1.0.24 - Apr 14, 2014	49
Version 1.0.23 - Apr 11, 2014	49
Version 1.0.22 - Mar 30, 2014	49
Version 1.0.21 - Mar 08, 2014	49
Version 1.0.20 - Mar 05, 2014	49
Version 1.0.19 - Mar 01, 2014	49
Version 1.0.18 - Feb 27, 2014	49
Version 1.0.17 - Feb 20, 2014	50
Version 1.0.16 - Feb 15, 2014	50
Version 1.0.15 - Feb 10, 2014	50
Version 1.0.14 - Feb 08, 2014	50

1 Setup

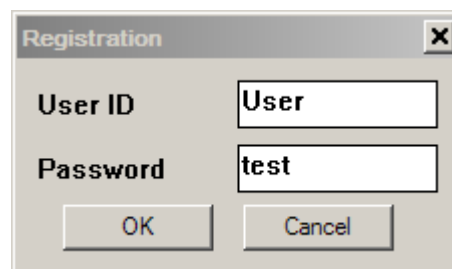
Please note that if you are trying out the Door Maker you will be asked to register a user id and password on cabmaker32.com website. At start up Door Maker will look for the config.txt file in config folder and if it isn't found it will then look for it in GKWare_doormaker folder. Door Maker will use the user id and password for your license type, "Trial" or "Licensed User". The user id and password must match the user id and password that you created when you register on cabmaker32.com.



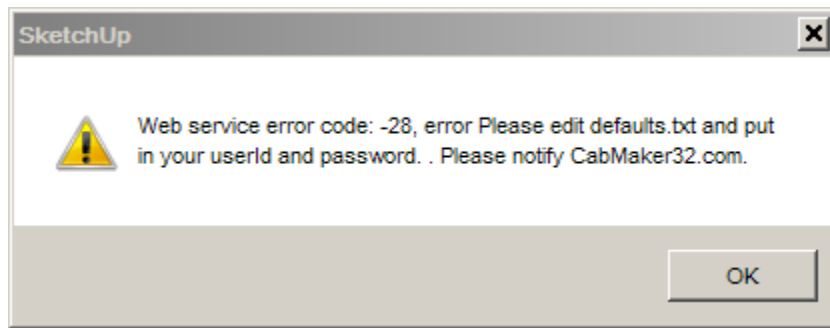
It is important that you have proper rights to these folders as Door Maker needs to write files. You will then see another message telling you what Door Maker is about to do. Please note that if you provide your own password at registration you will not receive an email.



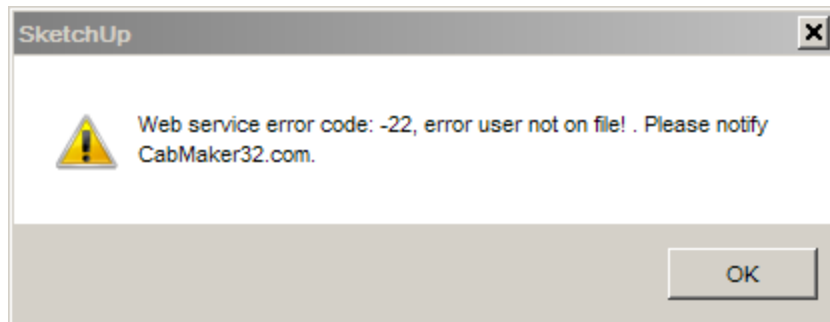
Once you have registered you will see an input box asking for User ID and Password. Please replace the default User ID and password with your own.



If you do not replace the User ID and Password you will see this error message.



If you do not type in the User ID and or Password correctly you will see this error message.

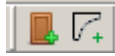


If you have one of these error messages you need to delete the license.dat file which is in GKWare_doormaker\config folder and try again. You will never loose anything if you delete the license.dat file. Your 'Trial' or 'licensed user' information is stored on the web site.

There are many different error messages. If you receive an error message that you do not understand please go to cabmaker32.com and email me with your problem. Please provide me with your User ID, Sketchup version and OS version as this can speed up rectifying the situation.

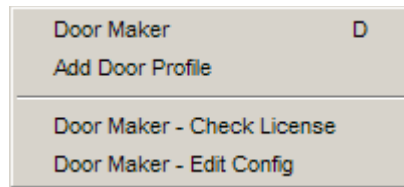
2 Introduction

The Door Maker suite has 2 buttons in the “GKWare Door Maker” tool bar and has 5 commands under the “Plugins/GKWare Door Maker” menu.



Tool Bar Buttons

1. The first button brings up the “Door Maker” configuration form.
2. The second button “Add Door Profile” allows you to add new profiles for panel raising, stile profile, front and back edge profiles and mitered profiles.



Menu Options

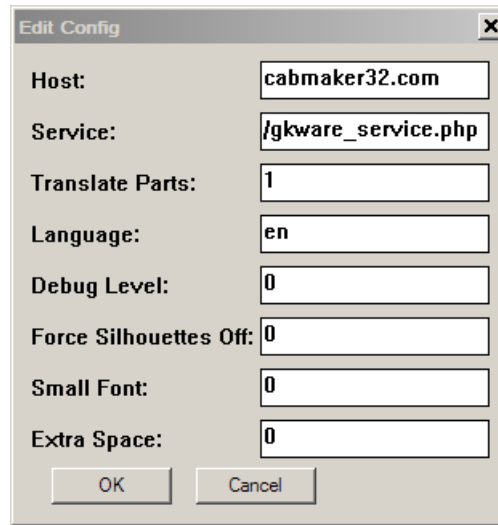
2 of the 4 menu choices work exactly the same way as the buttons on the toolbar. The menu choices are mostly in the same order and are:

1. Door Maker
2. Add Door Profile
3. Door Maker – Check License
4. Door Maker – Edit Config

Please notice that I have setup a short cut for Door Maker (D). Check License will bring up the registration input box. This lets you fix any keying mistakes you may have made during registration.

Edit Config

The "Edit Config" menu choice allows you to edit additional inputs found in config.txt without having to find the file on your harddrive.



Host:	<input type="text" value="cabmaker32.com"/>
Service:	<input type="text" value="/gkware_service.php"/>
Translate Parts:	<input type="text" value="1"/>
Language:	<input type="text" value="en"/>
Debug Level:	<input type="text" value="0"/>
Force Silhouettes Off:	<input type="text" value="0"/>
Small Font:	<input type="text" value="0"/>
Extra Space:	<input type="text" value="0"/>

OK Cancel

Host

This is my web site. Please leave this as "cabmaker32.com" Unfortunately it is possible that a web site provider shuts down which would make it necessary to change urls.

Service

This is the web service that the plugin communicates with to detect licensing etc. Please leave this as "/gkware_service.php"

Translate Parts

This is relevant if you are using a language other than English and wish to control whether each component is translated or left as English.

Language

Set the language code here. Please note that a new language code will be in effect after you restart Sketchup. Check "Save as Default" and Click "OK". Also note that if the language file does not exist then we default back to English "en". You can also create your own language file – start by copying the en.lang file found under the GKWare_DoorMaker/Translations folder. You can then edit the translation file using an editor like Notepad++. Make sure that you set Encoding to UTF-8 without BOM.

Different languages are more or less wordy than English and take up more or less space. If you edit a language file you may have to edit the "Screen Width Pixels" setting. Open the "Ruby Console" found under the "Window" menu, run the "Door Maker" and temporarily set the "Debug Level" to 1 and then click "Create Door". Then run "Door Maker" again and you will see a line of text show up in the "Ruby Console".

For the English translation file it says:
Recommended Minimum Screen Width = 695
en.lang
Defaults
"Screen Width Pixels" = "695"

For the French translation file it says:
Recommended Minimum Screen Width = 1021
fr.lang
Defaults
"Screen Width Pixels" = "1021"

For the Chinese traditional translation file it says:
Recommended Minimum Screen Width = 581
zh.lang
Defaults
"Screen Width Pixels" = "581"

If the input form doesn't format properly that means that Door Maker can not find the translation file. Please check the spelling of the language extension. If the language extension is correct then you may have a rights issue and or a problem with multiple copies of the language file on your hard drive.

Debug Level

This setting is currently not used. It is intended to be used to log various values of the ruby script for potential bug tracing.

Force Silhouettes Off

If checked this setting will turn off the Edge Style 'Profiles'. If not checked then Force Silhouettes has no effect.

Small Fonts

Set this field to 1 if you want smaller fonts and a smaller input box.

Extra Space

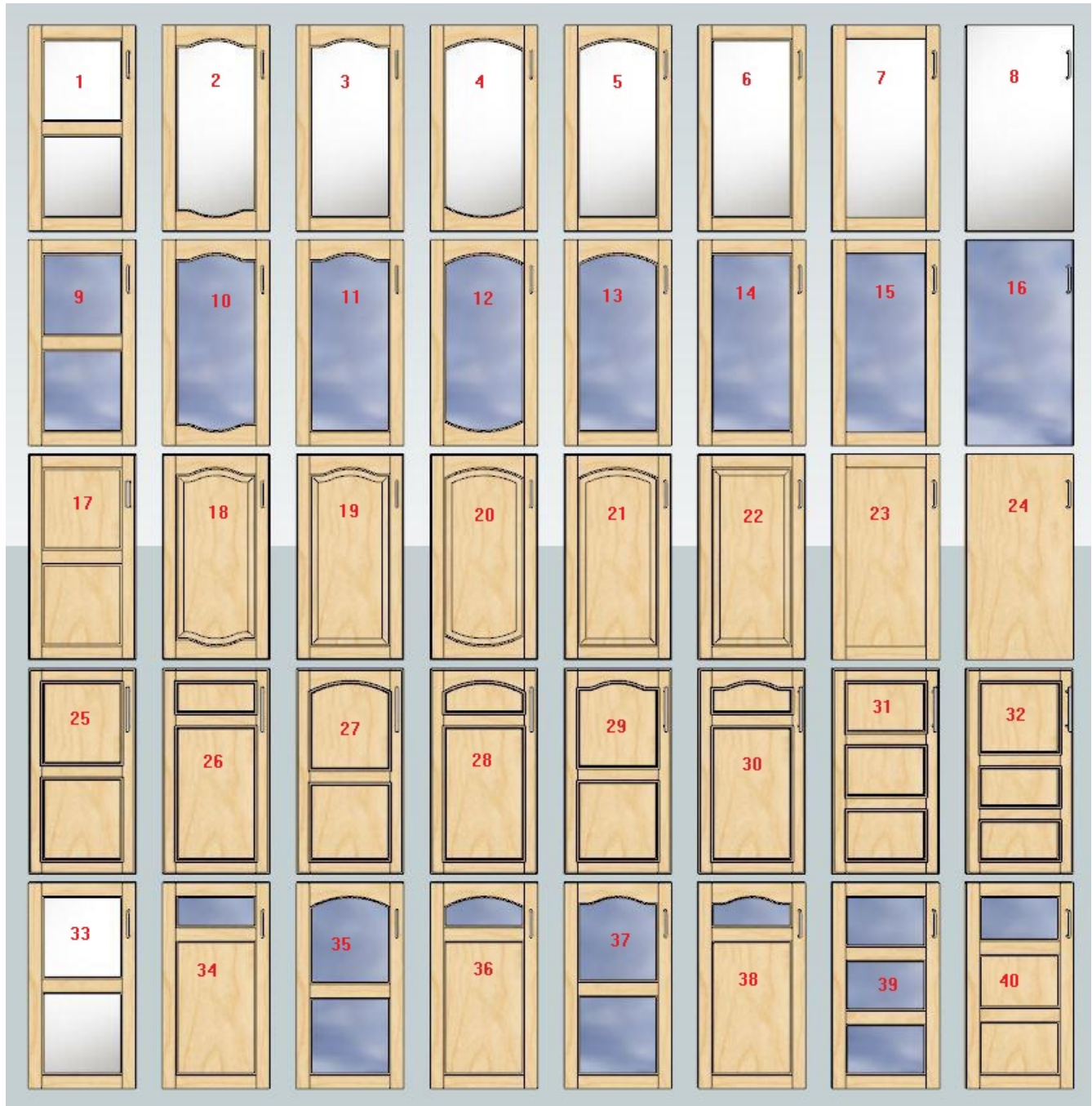
If you have modified your Screen Resolution you may need to add more space to keep the form side by side.

3 Gold Features

1. Passage doors and bifolds can be single or double complete with Door Jambs.
2. Double Passage doors can have an optional Astragal.
3. The Gold version allows you to have 0 to 3 Mullions for each square door section.
4. You can now set the width of the Top Rail with the Gold version.
5. The Gold version creates an optional Swing Layer (if named) which contains 2D door swings indicating the way a door opens.
6. You can now change the pivot point for Left or Right hand hinge doors.

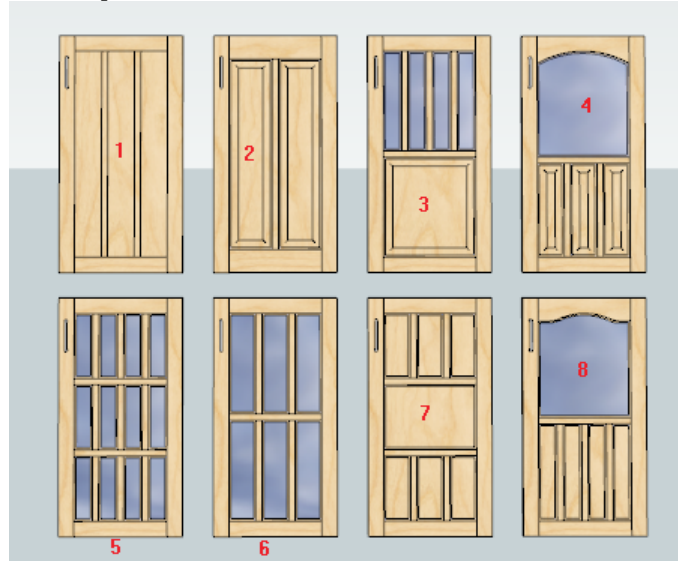
4 Maple Door examples

Flat panel and raised panel. The Pro version has handles and multi panel doors. With the Pro version there are many other permutations and combinations.



1. Square Square, 6mm Mirror, Half Bead, Bottom Panel Height set to 0
2. Double Cathedral, 6mm Mirror, Half Bead
3. Single Cathedral, 6mm Mirror, Half Bead
4. Double Arch, 6mm Mirror, Half Bead
5. Single Arch, 6mm Mirror, Half Bead
6. Square, 6mm Mirror, Half Bead
7. Shaker, 6mm Mirror
8. Plain Panel, 6mm Mirror
9. Square Square, 6mm Glass, Half Bead, Bottom Panel Height set to 0
10. Double Cathedral, 6mm Glass, Half Bead
11. Single Cathedral, 6mm Glass, Half Bead
12. Double Arch, 6mm Glass, Half Bead
13. Single Arch, 6mm Glass, Half Bead
14. Square, 6mm Glass, Half Bead
15. Shaker, 6mm Glass
16. Plain Panel, 6mm Glass
17. Square Square, 6mm flat panel, Half Bead, Bottom Panel Height set to 0
18. Double Cathedral, 19mm raised panel, Cove, Half Bead
19. Single Cathedral, 19mm raised panel, Cove, Half Bead
20. Double Arch, 19mm raised panel, Cove, Half Bead
21. Single Arch, 19mm raised panel, Cove, Half Bead
22. Square, 19mm raised panel, Cove, Half Bead
23. Shaker, 6mm flat panel
24. Plain Panel, 19mm flat panel
25. Square Square, 6mm flat panel, Portland, Bottom Panel Height set to 0
26. Square Square, 6mm flat panel, Portland, Bottom Panel Height
27. Arch Square, 6mm flat panel, Portland, Bottom Panel Height set to 0
28. Arch Square, 6mm flat panel, Portland, Bottom Panel Height
29. Cathedral Square, 6mm flat panel, Portland, Bottom Panel Height set to 0
30. Cathedral Square, 6mm flat panel, Portland, Bottom Panel Height
31. Three Panel Square, 6mm flat panel, Portland, Bottom Panel Height set to 0
32. Three Panel Square, 6mm flat panel, Portland, Bottom Panel Height
33. Square Square, 6mm mirror, Full Bead, Bottom Panel Height set to 0
34. Square Square, 6mm glass combo, Full Bead, Bottom Panel Height
35. Arch Square, 6mm glass, Full Bead, Bottom Panel Height set to 0
36. Arch Square, 6mm glass combo, Full Bead, Bottom Panel Height
37. Cathedral Square, 6mm glass, Full Bead, Bottom Panel Height set to 0
38. Cathedral Square, 6mm glass combo, Full Bead, Bottom Panel Height
39. Three Panel Square, 6mm glass, Full Bead, Bottom Panel Height set to 0
40. Three Panel Square, 6mm glass combo, Full Bead, Bottom Panel Height

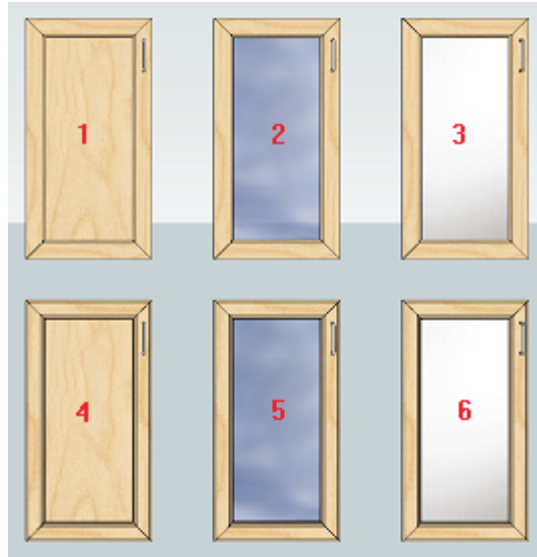
5 Some Door Examples with Mullions – Gold Version



1. Shaker, 2 Mullions Bottom, 25 mm Mullion Width, 6mm panel
2. Square, 1 Mullion Bottom, 25 mm Mullion Width, Top Rail & Bottom Rail Width 75mm, 19mm raised panel
3. Square Square, 6mm glass combo, 3 Mullions Middle, 25 mm Mullion Width, 19mm raised panel
4. Arch Square, 6mm glass combo, 2 Mullions Bottom, 19mm raised panel, 25 mm Mullion Width
5. 3 Panel Square, 6mm glass, 3 Mullions Bottom, 3 Mullions Top, 25 mm Mullion Width
6. Square Square, 6mm glass, 2 Mullions Bottom, 2 Mullions Middle, 25 mm Mullion Width
7. 3 Panel Square, 6mm panel, 2 Mullions Bottom, 2 Mullions Top, 25 mm Mullion Width
8. Cathedral Square, 6mm glass combo, 6 mm panel, 3 Mullions Bottom

6 Mitered Door Examples

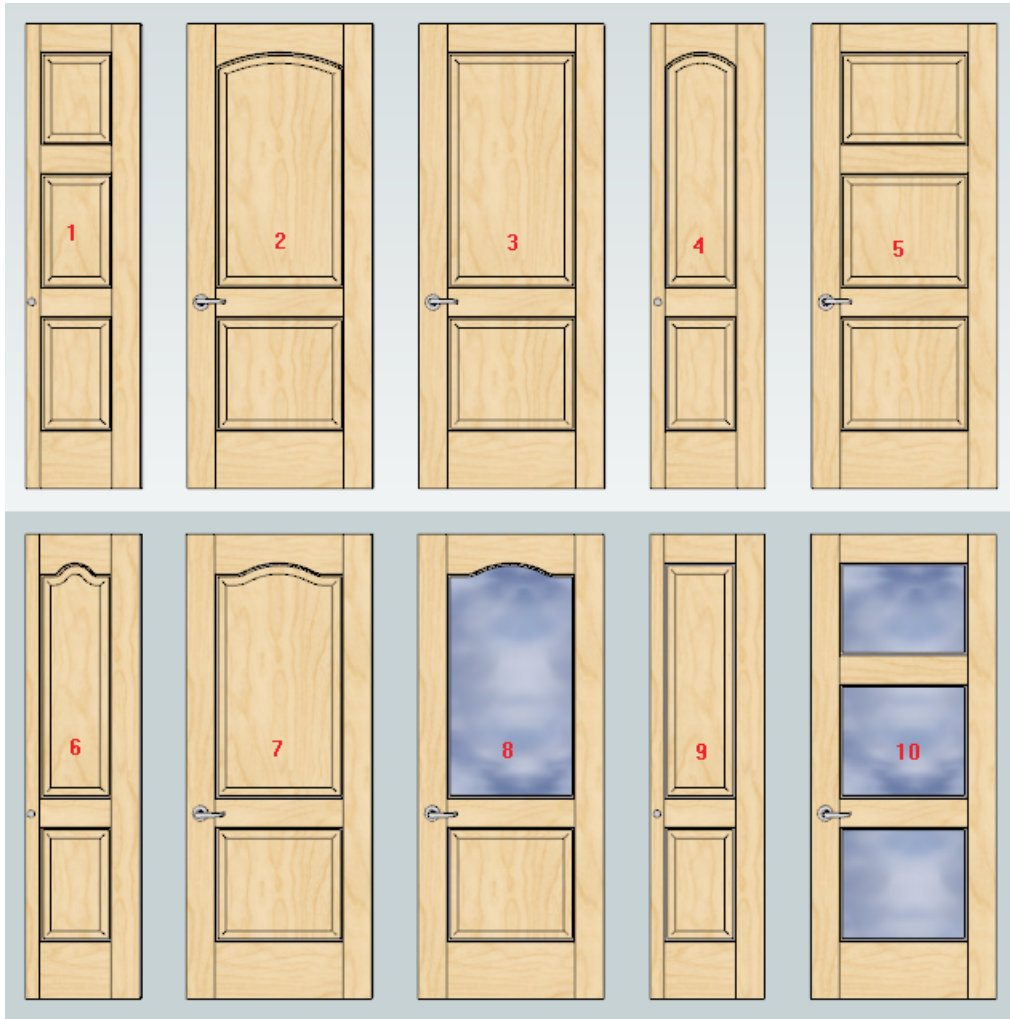
The Pro version has mitered frame doors. Users can select from the two provided “Mitered Profiles” or easily create their own.



1. Mitered Square, Simple Profile
2. Mitered Square, Simple Profile, Glass
3. Mitered Square, Simple Profile, Mirror
4. Mitered Square, Crown Profile
5. Mitered Square, Crown Profile, Glass
6. Mitered Square, Crown Profile, Mirror

7 Passage Door Examples

The Pro version makes it easy to create various types of passage doors and bi-fold door sections. These examples all have a number of common settings including: Door Thickness 32 mm, Panel Thickness 32 mm, Bottom Panel 500 mm, Stile Width 125 mm and Bottom Rail Width 250 mm.



1. Three Panel Square, Half Stile
2. Arch Square
3. Square Square
4. Arch Square, Half Stile
5. Three Panel Square
6. Cathedral Square, Half Stile
7. Cathedral Square
8. Cathedral Square, Glass Combo
9. Square Square, Half Stile
10. Three Panel Square, Glass

8 Various Door Jamb Examples – Gold

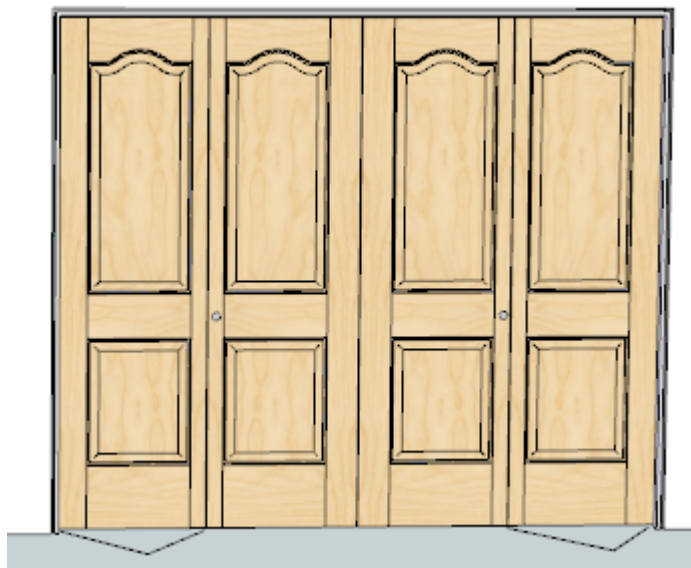
Double Entry Doors with Astragal and side-lights. 120 degree Hinge Angle.



Wide Passage Door with pivot point



Double Bifold



Single Bifold



9 Door Maker Web Dialog – Gold

The Gold version provides 2 tabbed entry areas. Users with Pro licenses will automatically get a gold license trial.

Door Maker Gold is licensed

Configuration Gold Help File

Red captions have tool tips.

Door Style:	Door	Tool Option:	drag
Door Material:	Baltic	Door Gap:	3.0mm
Door Shape:	Cathedral Square	Door Protrusion:	11.0mm
Wood Grain:	Standard		
Stile Width:	125.0mm	Top Rail Width:	125.0mm
Middle Section Height:	0.0mm	Lock Rail Width:	175.0mm
Bottom Section Height:	500.0mm	Bottom Rail Width:	250.0mm
Door Width:	1800.0mm	Handle Location:	Bottom Left
Door Height:	2000.0mm	Offset from Location:	837.5mm
Door Angle:	0	Handle Style:	Round Knob
Door Thickness:	32.0mm	Second Handle:	<input checked="" type="checkbox"/>
Door Panel Thickness:	32.0mm	Click Action:	Hinge Right
Center Shaker Panel:	<input type="checkbox"/>	Hinge Angle:	85.0
Half Width Stile:	None	Pivot Point:	35.0mm
Swing Layer:	Swing	Pullout Depth:	500.0mm
Door Panel Profile:	Cove Large	Cabinet Number:	0
Stile Profile:	Cove Large	Layer Number:	0
Door Front Edge Profile:	None	Open Style Sheet:	heritage passage door
Door Back Edge Profile:	None	Save Style Sheet:	Do Not Save
Mitered Profile:	Crown	Create Door:	OK

10 Door Maker Web Dialog – Pro

The Pro version does not have the “Gold” tab. It is also missing “Pivot Point” and “Swing Layer”.

Door Maker Pro is licensed

Configuration Help File

Red captions have tool tips.

Door Style:	Door	Tool Option:	drag
Door Material:	Baltic	Door Gap:	3.0mm
Door Shape:	Cathedral Square	Door Protrusion:	11.0mm
Wood Grain:	Standard		
Stile Width:	125.0mm	Lock Rail Width:	175.0mm
Middle Section Height:	0.0mm	Bottom Rail Width:	250.0mm
Bottom Section Height:	500.0mm		
Door Width:	1800.0mm	Handle Location:	Bottom Left
Door Height:	2000.0mm	Offset from Location:	837.5mm
Door Angle:	0	Handle Style:	Round Knob
Door Thickness:	32.0mm	Second Handle:	<input checked="" type="checkbox"/>
Door Panel Thickness:	32.0mm	Click Action:	Hinge Right
Center Shaker Panel:	<input type="checkbox"/>	Hinge Angle:	85.0
Half Width Stile:	None	Pullout Depth:	500.0mm
Door Panel Profile:	Cove Large	Cabinet Number:	0
Stile Profile:	Cove Large	Layer Number:	0
Door Front Edge Profile:	None	Open Style Sheet:	heritage passage doc
Door Back Edge Profile:	None	Save Style Sheet:	Do Not Save
Mitered Profile:	Crown	Create Door:	OK:

11 Door Maker Web Dialog – Pro with small fonts

Door Maker allows you to change the height of the input box by using smaller fonts. In the Door Maker – Edit Config editor set Small Fonts to 1.

Door Maker Pro is licensed

Configuration Help File

Red captions have tool tips.

Door Style:	Door	Tool Option:	drag
Door Material:	Baltic	Door Gap:	3.0mm
Door Shape:	Cathedral Square	Door Protrusion:	11.0mm
Wood Grain:	Standard		
Stile Width:	125.0mm	Lock Rail Width:	175.0mm
Middle Section Height:	0.0mm	Bottom Rail Width:	250.0mm
Bottom Section Height:	500.0mm		
Door Width:	1800.0mm	Handle Location:	Bottom Left
Door Height:	2000.0mm	Offset from Location:	837.5mm
Door Angle:	0	Handle Style:	Round Knob
Door Thickness:	32.0mm	Second Handle:	<input checked="" type="checkbox"/>
Door Panel Thickness:	32.0mm	Click Action:	Hinge Right
Center Shaker Panel:	<input type="checkbox"/>	Hinge Angle:	85.0
Half Width Stile:	None	Pullout Depth:	500.0mm
Door Panel Profile:	Cove Large	Cabinet Number:	0
Stile Profile:	Cove Large	Layer Number:	0
Door Front Edge Profile:	None	Open Style Sheet:	heritage passage do
Door Back Edge Profile:	None	Save Style Sheet:	Do Not Save
Mitered Profile:	Crown	Create Door:	OK

Door Style

There are 5 main “Door Styles”.

1. Door – This style will apply “Door Material” vertically to the panel.
2. Drawer – This style will apply “Door Material” horizontally to the panel. Narrow drawers may have their top and bottom rails adjusted.
3. Glass – This style will apply “Glass” to all center panels. Please adjust the panel thickness accordingly. 6.3 mm works well.
4. Mirror – This style will apply “Mirror” to all center panels. Please adjust the panel thickness accordingly. 6.3 mm works well.
5. Glass Combo – This style works with multi panel doors. The top panel is glass. If the door is a passage door and is at least 30 mm thick then the thickness of the glass is automatically adjusted. The depth of the supplied panel profiles is 8.7 mm. $30 - (2 \times 8.7) = 12.6$ mm.

Door Material

The “Door Material” is the material / texture that will be applied to various parts of the door. Choose “White” for no material or choose the wood grain texture that you want. If the texture does not exist or cannot be found then materials are not applied. You can add additional textures by putting jpg file(s) into gkware_doormaker/images folder and by editing the gkware_doormaker/textures.txt file.

For example: To add “Rosewood”, edit the textures.txt file and add the line (between the square brackets) where you want it to appear in the list [Rosewood,36]. The 36 means that the pattern is 36 inches so adjust this accordingly. Please note that the wood grain pattern must be vertical. Then add the image file [rosewood_ver.jpg] into the gkware_doormaker/images folder

Door Shape

1. Plain Panel – Also known as a “Slab” door
2. Shaker – The Shaker door is meant for a thin center panel of around 6.3 mm. Regardless there is no stile or panel profiling with this door shape. Door Maker has an option “Center Shaker Panel” which will recess the panel by one half of the difference between the door thickness and the panel thickness.
3. Square – Can be a raised panel door or a thin center panel.
4. Single Arch – This shape has a simple arch top rail. Can be a raised panel door or a thin center panel.
5. Double Arch – This shape has simple arch on both the top and bottom rails. Can be a raised panel door or a thin center panel.
6. Single Cathedral – This shape has a more complex cathedral shaped top rail. Can be a raised panel door or a thin center panel.
7. Double Cathedral – This shape has a more complex cathedral shaped top and bottom rail. Can be a raised panel door or a thin center panel.

Shapes 8, 9 and 10 are two panel doors, shape 11 is a three panel door and shape 12 is a mitered door. If you set the “Bottom Panel Height” to 0 then “Door Maker” will create equal height panels. If you set the “Bottom Panel Height” to a non 0 value then “Door Maker” will calculate the height of the top panel and set the bottom or bottom 2 panels to the value you set.

8. Square Square – Can be a raised panel door or a thin center panel.
9. Arch Square – This shape has a simple arch on the top rail. The bottom panel is square. Can be a raised panel door or a thin center panel.
10. Cathedral Square – This shape has the more complex cathedral shaped top rail. The bottom panel is square. Can be a raised panel door or a thin center panel.
11. Three Panel Square – This is the only 3 panel door. All panels are square. Can be a raised panel door or a thin center panel.
12. Mitered Square – This is door with a mitered frame. Users can create their own profiles. Many options are disabled with “Mitered Square” including: Door Thickness, Half Stile Width, Stile Profile, Door Front Edge Profile, Door Back Edge Profile, Bottom Rail Width, Bottom Panel Height and sometimes Stile Width and Panel Profile.

Wood Grain

Door Maker has a 'Wood Grain' drop down. There are 3 choices, 'Standard', 'Vertical' and 'Horizontal'. This allows you to change the grain direction of door and drawer panels.

1. Standard - door panels have vertical grain and drawer panels have horizontal grain.
2. Vertical - all panels have vertical grain.
3. Horizontal - all panels have horizontal grain.

Tool Option

The Tool Option contains 4 entries; “one click”, “drag”, “overlay” and “inset” which changes the behavior of the Door Maker.

1. “One click” places a door each time the user clicks somewhere in the model. Please note that the doors lower left hand back corner is used as the insertion point.



It is also important to know that the door is offset by the amount of the “Door Gap”. This next screen shot shows the second door with a 1/8” gap between the doors.

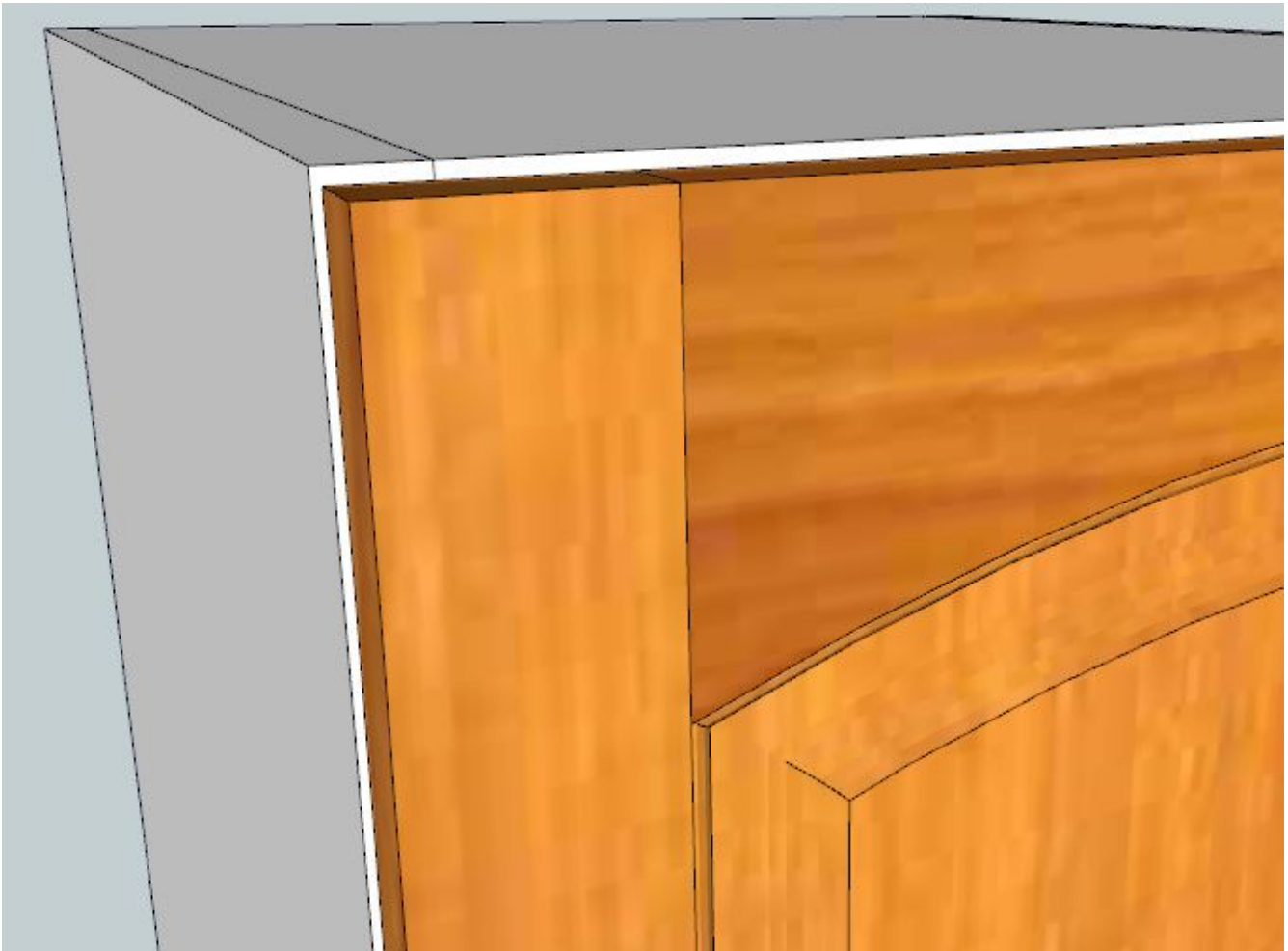


Instead of clicking you can also simply enter the values. For example: 12,24,1/8” will create a door 12” wide 24” high using a 1/8” gap. Also notice that the values that you enter become the new values for the input box.

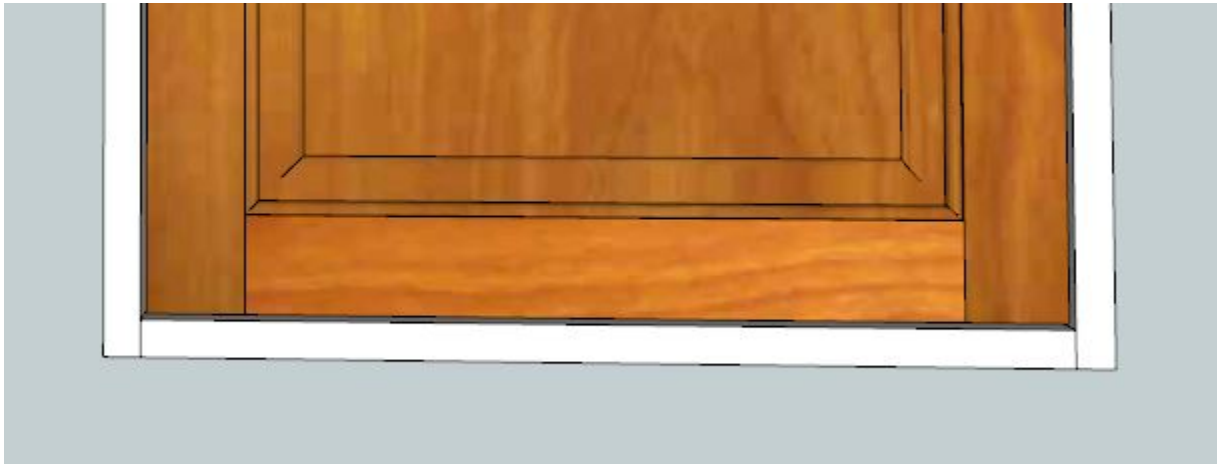
2. “drag” works a bit differently. The “Door Width”, “Door Height”, “Door Gap”, “Door Protrusion” and “Door Angle” settings are ignored. You click 1 of the 4 corners and then drag the mouse over to the opposite side of the door. The tool tip shows you the width, height and angle of the door.

You can click on a point and then enter a value just like you do for “one click”. Although you can enter a third value for “Door Gap” and it will show up in the input box, it is ignored for a “drag” operation. The current angle will be used

3. “overlay” is similar to drag except that the “Door Gap”, and “Door Protrusion” settings are honored. 1/2 of the “Door Gap” is on the left side of the door and the other 1/2 of the “Door Gap” is on the right side of the door. The full “Door Gap” is used at the top of the door and no “Door Gap” at the bottom of the door.



4. “inset” is similar to “overlay” except that the door is inserted so that it is flush to the front frame and the full “Door Gap” is on both sides, top and bottom. You can achieve a half overlay look by setting the “Door Gap” to a negative value and the “Door Protrusion” to a value slightly larger than 1/2 of the thickness of the door.



Door Gap

The “Door Gap” is the amount of clearance you want between 2 doors. Please refer to the “Tool Option” section above for further clarification. This setting is ignored with the “drag” method resulting in a disabled text input.

Door Protrusion

The “Door Protrusion” option is used for “overlay” and “inset” methods and is ignored for the “one click” and “drag” methods. For clarity all ignored settings and captions are disabled.

With the “overlay” method the “Door Protrusion” is the amount that the back face of the door is in front of the front edge of the cabinet sides, top and bottom. Essentially, this clearance for 35mm cup hinges. This is important for 45 degree corner cabinets.

With the “inset” method the “Door Protrusion” a value of 0 means the front face of the door is level with the front edge of the cabinet sides, top and bottom. You can use a negative value to recess the face behind the front edge of the cabinet sides. This might be used with a chest of drawers where you want the front edge of the sides in front of the front face of the drawers. You can use a positive value to have the doors and drawer front face to protrude in front of the front edge of the sides.

Please refer to the “Tool Option” section above for further clarification.

Force Silhouettes Off

If checked this setting will turn off the Edge Style 'Profiles'. If not checked then Force Silhouettes has no effect.

Stile Width

This is the width of the stiles. It is also used by default for the rails, however you can independently adjust the “Bottom Rail Width” and “Lock Rail Width”. The Gold version also allows you to independently adjust the “Top Rail Width”.

Middle Section Height

This feature is used for 3 section doors only. If you set this value to 0 “Door Maker” will evenly space out the top 2 sections.

Bottom Section Height

This feature is used for multi panel doors. Please see “Door Shape” items 8 through 11. You can set this value to 0 and the “Door Maker” plugin will calculate the “Bottom Panel Height” so that all panels are equal.

This option is disabled for “Plain Panel” and all “Mitered Square” door shapes.

Please note that the “Stile Width” is for the face. The bead is added internally to this value. The “Stile Width” is used internally to position the door handle. Slab doors do not have stiles, however, this setting is used to determine handle position for slab doors.

In the case of the “Mitered Square” door shape if edge information is stored with the profile then the “Stile Width” is disabled and the text box displays the derived value.

Top Rail Width

The Gold version allows you to change the Top Rail Width for most doors. This feature is disabled for “Plain Panel” doors and for “Mitered Doors”. You may set this value to 0 and “Door Maker” will use the “Stile Width” for the “Top Rail Width”.

Lock Rail Width

This feature is used mostly with passage doors where you want the rail that is close to the lockset to be a different width than the Stiles or Bottom Rail. You can set this value to 0 and “Door Maker” will ignore it and make the “Lock Rail Width” the same width as the “Stile Width”. This option is only enabled for doors that have multiple sections.

Bottom Rail Width

This feature is used mostly with passage doors where the bottom rail is wider than the other rails and stiles. You can set the “Bottom Rail Width” to 0 and the “Door Maker” plugin will ignore it and make the “Bottom Rail Width” the same width as the “Stile Width”.

This option is disabled for all “Mitered Square” door shapes.

Door Width

The “Door Width” is only required for the “one click” method. The other 3 drag methods set this value.

Door Height

The “Door Height” is only required for the “one click” method. The other 3 drag methods set this value.

Door Angle

The “Door Angle” is only required for the “one click” method. The other 3 drag methods set this value. Please note that “Save as Default” sets this value as 0.

Door Thickness

The “Door Thickness” is required. Doors that are 19 mm or thicker with a panel of equal thickness are profiled on both the front and back of the panel. Doors that are at least 19 mm thick but are less than 30 mm thick use a simple relief cutter for the back profile. With the Pro version doors that are at least 30 mm thick have the panel profile and stile profile applied to both the front and the back of the door.

This option is disabled for the “Mitered Square” door shape since the door thickness is determined from the “Mitered Profile”.

Door Panel Thickness

The “Door Panel Thickness” can be any value you want. Set the “Door Panel Thickness” to a value greater than 12 mm for a panel raised door. The panel will be flush with the stiles and rails. A thickness of 12 mm or less will position behind the face of the stiles and rails by the amount of the depth of the panel profile which is 8.7 mm with the supplied profiles.

Doors that are at least 19 mm thick and have their panels the same thickness will have a relief cut on the back of the panel. For doors that are at least 30 mm thick there is a pro version feature that will put the panel profile and stile profile on both sides of the door.

The “Mitered Profile” for the “Mitered Square” door shape may have edge information stored with the profile. In this case the “Door Panel Thickness” comes from the profile. In this case the “Door Panel Thickness” is disabled and the text box displays the derived value.

Center Shaker Panel

This feature is only used for shaker doors. Check this if you want the panel to be centered evenly. Otherwise the panel is positioned based on the “Stile Profile” even though stile profiles are not used with Shaker doors.

Half Width Stile

The 'Half Width Stile' drop down has 3 options: Neither, Left Stile and Right Stile. This setting is specifically for bi-fold doors where the hinge side stile of each bi-fold section is commonly half the width. The handle location is used to determine which stile will be half size. The “Half Width Stile” is the stile opposite to the handle location.

This option is disabled for both the “Plain Panel” and “Mitered Square” door shapes.

1. Neither - left and right stile are full sized.
2. Left Stile - left stile is half size and right stile is full size.
3. Right Stile - right stile is half size and left stile is full size.

Swing Layer

“Door Maker” will draw lines and arcs on this layer for 2D floor plans. Bifold Doors and Passage Doors use this Gold feature providing the “Swing Layer” setting contains at least 1 character. For passage doors the arc follows the doors rotation. The arc honors the pivot point and honors the hinge angle. For bifold doors the lines are 30 degrees and the length of the line represents the width of the door minus the pivot point.

Handle Location

There are 8 “Handle Locations” which are:

1. 0s – None

2. 7s - Top Left
3. 8s - Top Center
4. 9s - Top Right
5. 5s – Center
6. 1s - Bottom Left
7. 2s - Bottom Center
8. 3s - Bottom Right

Please note that you can also set the location of the handle with keyboard. The short cut keys are beside the handle locations. They follow the num pad on the keyboard.

When a “Handle Location” is changed using the form the “Click Action” is automatically adjusted. You may override the “Click Action” after you change the “Handle Location”.

Offset From Location

This feature is only relevant for the 4 corner “Handle Locations”. This value is how far the center of the handle is from the top or bottom edge of the door.

Handle Style

Door Maker supplies 7 default handles which are:

1. 128 mm Bar Pull
2. 196 mm Bar Pull
3. 96 mm Flat Bar Pull
4. 96 mm Wire Pull
5. Door Handle Latch
6. Round Knob
7. Schlage Modern
8. ...

You can add more handles providing they follow the same format. The insertion point is center and the handle is oriented vertically.

Second Handle

The 'Second Handle' check box adds a mirrored copy of the handle to the back side of the door. This setting is specifically used for passage doors.

Click Action

Doors or Drawer fronts can open using “Hinge Angle” or can pull out using Pullout Depth.

When a “Handle Location” is changed using the form the “Click Action” is automatically adjusted. You may override the “Click Action” after you change the “Handle Location”. Please note that you can have a “Click Action” without a handle location.

Hinge Angle

If the “Click Action” is set to one of the 4 hinge choices the “Hinge Angle” is used to limit how far the door or drawer front rotates open.

Pivot Point

The Gold Version lets you set the “Pivot Point”.

Pullout Depth

If the “Click Action” is set to “Pullout” then the “Pullout Depth” is used to limit how far the door or drawer front pulls out.

Layer Number

Set this if you want your doors to go onto a specific layer. By defaults the handles go to layer 0.

Door Panel Profile

Door Maker has custom profile capabilities. Door Maker includes 5 profiles which are:

1. Cove
2. Cove Large
3. Ogee
4. Slant
5. Tight
6. ...

You can add more profiles. This option is disabled for the “Plain Panel” door shape and for some “Mitered Square” door shapes when edge information is stored with the “Mitered Profile”.

Stile Profile

Door Maker has custom profile capabilities. Door Maker provides a “None” choice as well as 5 profiles which are:

1. None
2. Cove Large
3. Full Bead
4. Half Bead
5. Ogee
6. Portland
7. Slant
8. ...

You can add more profiles. This option is disabled for the “Plain Panel” door shape and for some “Mitered Square” door shapes when edge information is stored with the “Mitered Profile”.

Door Front Edge Profile

Door Maker provides 6 profiles including a “None” choice. The profiles are:

1. None
2. 3 mm Roundover
3. 6 mm Roundover
4. Bead
5. Chamfer
6. Cove
7. ...

You can add more profiles. This option is disabled for some “Mitered Square” door shapes when edge information is stored with the “Mitered Profile”.

Door Back Edge Profile

Door Maker provides. a “None” choice as well as 2 profiles which are:

1. None
2. 3 mm Roundover
3. 10 mm Rabbet
4. ...

You can add more profiles.

Mitered Profile

There are 2 profiles included which are:

1. Crown
2. Simple
3. ...

You can add more profiles. This option is disabled for some “Mitered Square” door shapes when edge information is stored with the “Mitered Profile”.

Cabinet Number

This is an optional value. You may wish to number your cabinets and also number your doors the same.

Open Style Sheet

The “Open Style Sheet” drop down contains a list of saved style sheets. Retrieve a saved style sheet by selecting a different style sheet. Please note if you make unsaved changes to the current style and then select a new style that those changes will not be saved.

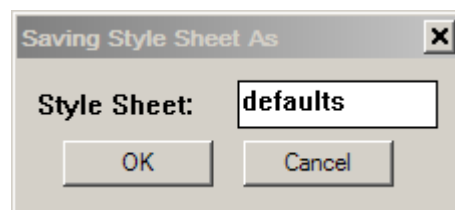
Save Style Sheet

The 'Save Style Sheet' drop down contains 3 choices: 'Do Not Save', 'Save' and 'Save As'.

1. Do Not Save - any changes to style sheet are for this session only.
2. Save - update current style sheet with current settings.
3. Save As - create a new style sheet with current settings.

Choose 'Save As' and click the 'OK' button to create a new style sheet. The style sheet is added to the drop down 'Open Style Sheet' and the current selection contains the name of the new style sheet.

An input form pops up when you choose the 'Save As' option and you click the 'OK' button. The text box is pre-populated with the current Style Sheet. You can click 'OK' and update the current Style Sheet or change the name and create a new Style Sheet. If you change the name to another existing Style Sheet it will be over written with the current settings.



The next time you open the Door Maker web dialog box you will see the Open Style Sheet contains the name of the saved Style Sheet.

12 Door Maker Web Dialog – Gold second Tab

The second tab of the Gold version is named “Gold” and contains door jamb and mullion inputs.

The screenshot shows the 'Door Maker Gold' software window with the 'Gold' tab selected. The window title is 'Door Maker Gold is licensed'. The interface is divided into two main sections. The left section contains a list of door jamb parameters, each with a text input field or a dropdown menu. The right section contains mullion parameters, each with a text input field. A red text label 'Red captions have tool tips.' is located in the top right corner of the dialog.

Parameter	Value
Door Jambs:	Double
Astragal:	Left Door
Jamb Thickness:	16.0mm
Rabbit Thickness:	12.0mm
Raise Door in Jamb:	12.0mm
Wall Thickness:	115.0mm
Rough Opening:	12.0mm
Left Side-light Width:	300.0mm
Right Side-light Width:	300.0mm
Side-light Extra Width:	0.0mm
Mullions Top Section:	0
Mullions Middle Section:	0
Mullions Bottom Section:	0
Width - Mullions etc:	0.0mm

Door Jambs

The Gold Version allows you to build Single or Double passage doors and Single or Double bifolds. Choosing “Single” or “Double” enables a number of parameters in the Door Jamb section of the input form. Please note that you must set “Half Width Stile” to “Left Stile” or “Right Stile” in conjunction with a Door Jambs setting of “Single” or “Double” to get half jambs and bifold doors.

Astragals

Astragals are only relevant for “Double” passage doors and not for bifolds. “Astragal” remains disabled in all other circumstances. When using an astragal the width of both double doors are adjusted to accommodate the thickness of the astragal. Your choices are to attach the astragal to the right or left door. This setting is only available with the Gold version.

Jamb Thickness

The “Jamb Thickness” is enabled for “Single” or “Double” “Door Jambs” and is only available with the Gold version. Please note that the “Jamb Thickness” is not the overall thickness of the jamb. This is done this way because Half jambs do not have Rabbits.

Rabbit Thickness

Consider the “Rabbit Thickness” as the same as the thickness of a door stop. Door Maker currently only supports rabbeted jambs for passage doors. This setting is only enabled for “Single” or “Double” passage doors and is disabled in all other circumstances including “Single” or “Double” bifolds. This is a Gold only feature.

Raise Door In Jamb

This is a Gold only feature and enabled with Half Jambs and with Full Jambs. This is the amount that the door is raised in the jamb intended to provide room for the door to pass over floor coverings. You may set this value to 0.

Wall Thickness

This Gold only feature is enabled for Half and Full Jambs. Otherwise this setting it is disabled. By default this value is set to 4 1/2" or 115 mm. This width works with 2X4 walls complete with 1/2 drywall on both sides. If you are using Jamb extensions then set this value to the width of the Door Jamb before extensions. Door Maker currently does not support jamb extensions or architraves.

Rough Opening

This Gold only feature is available for Single and Double doors using Half or Full Jambs. You may want to set this value to 1/2" for Half Jambs and typically to 1/4" for passage doors. You can set this value to 0 if you do not want to deal with Rough Openings.

Left Side-light Width

Entry door systems may have 1 or 2 side-lights. This Gold only feature is enabled for Single and Double passage doors and disabled in all other circumstances.

Please note that Door make does not build a Side-light, it only creates a rabbeted area for you to add side-lights yourself. This is the setting for the left side-light which can be different than the right side-light. Set this value to 0 to turn off Left Side-lights.

Right Side-light Width

Entry door systems may have 1 or 2 side-lights. This Gold only feature is enabled for Single and Double passage doors and disabled in all other circumstances.

Please note that Door make does not build a Side-light, it only creates a rabbeted area for you to add side-lights yourself. This is the setting for the right side-light which can be different than the left side-light. Set this value to 0 to turn off Right Side-lights.

Side-light Extra Width

The "Side-light Extra Width" setting is to provide additional room between the door and the side-light. This provides room for an additional decorative moulding between the door and the side-light. This feature is only enabled for the Gold version and for Single or Double Passage Doors.

If you want room for a 2" wide moulding and if your Jamb Thickness is set to 5/8" and if you want 1/4" reveal on both sides of the moulding then set this value to 2 1/2" - 5/8" or 1 7/8". You may set this value to 0. You may also set this value less than 0 if you want the jamb member thinner than the outside jamb members.

Mullions Top Section

This Gold only feature is only enabled for 3 panel doors. Mullions are internal vertical stiles and turn the Top Section of the door into multiple panels that are evenly spaced. This setting should be used carefully as you may end up with a door that has insufficient space for panels with proper geometry. You may choose 0 to 3 mullions. You can also change the Width of the mullions.

Mullions Middle Section

This Gold feature is enabled for 2 and 3 section doors but only for square sections. This feature currently does not work for arch square, or cathedral square doors. As with the top section you may choose 0 to 3 mullions.

Mullions Bottom Section

This feature is also a Gold only feature and is enabled for all 2 and 3 section doors as well as shaker doors. As with the top and middle sections you may choose 0 to 3 mullions.

Width Mullions etc

You may change the width of your mullions. This setting also controls the intermediate rail on 3 section doors. If you set this value to 0 then mullions and intermediate rails widths are determined by the “Stile Width”.

13 Additional Notes

By default the interact short cut is the 'I' key. If the door has interaction stored with the door or drawer then the door or drawer will open / close or pull out / push in.

The default measurements will be in imperial or in metric depending upon the model's units. The default units are loaded once for a session and at the time that the input box first appears.

Please note that the tool shows up in the Plugins menu. For myself I add the hot key 'D' to bring up the door menu. Otherwise you pick it from the menu or from the tool bar.

A 5/8" door panel with a 3/4" door has panel raising on the front only. If you set the door panel to 3/4" then the door panel will be profiled on the back as well as the front. This additional geometry can be avoided by keeping the door panel to 5/8"

The "Door Protrusion" option is used for "overlay" and "inset" methods. For "overlay" method it is the amount that the door is in front of the cabinet. For "inset" method it is the amount that the front face of the door is in front of the sides.

You may change model Units settings during a session. The input box converts existing values to the new Units.

Door Maker has a "Save As Defaults" checkbox. Check this box and Click "Create Door". Door Maker will automatically save all the current settings to the defaults.txt file and place the file in the config folder.

14 Defaults.txt

defaults

center_shaker=1

second_handle=0

material=Cherry

style=Door

shape=Single Cathedral

option=one click

layer=0

cabinet=0

panel_profile=Cove

stile_profile=None

front_edge_profile=None

back_edge_profile=None

mitered_profile=Crown

handle_style=96 mm Wire Pull

handle_location=None

click_action=Pull Out

hinge_angle=120.0

grain=Standard

half_stile=Neither

metric defaults

metric_width=400.0

metric_height=768.0

metric_thickness=19.0

metric_panel_thickness=15.0

metric_stile_width=50.0

metric_gap=3.0

metric_protrusion=2.0

metric_handle_offset=120.0

metric_bottom_rail_width=0.0

metric_bottom_panel_height=0.0

metric_pullout_depth=500.0

imperial defaults

imperial_width=16

imperial_height=30.5

imperial_thickness=0.75

imperial_panel_thickness=0.625

imperial_stile_width=2

imperial_gap=0.125

imperial_protrusion=0.078

imperial_handle_offset=5

```
imperial_bottom_rail_width=0  
imperial_bottom_panel_height=0  
imperial_pullout_depth=20
```

15 Config.txt

Door Maker comes with a config.txt file that currently contains five lines.

1. userid=User
2. password=test
3. host=cabmaker32.com
4. service=/gkware_service.php
5. default_file=defaults
6. language=en
7. debug=0
8. force_silhouettes_off=0
9. translate_parts=1

If the user id or password is blank you will get an error and will not be able to run the Door Maker plugin.

Config.txt now contains items 6, 7, 8 and 9 that used to be in defaults.txt. These items are no longer in defaults.txt or in any of the named Style Sheets.

16 Door Maker Options

There are 3 optional files that are included. These files allow you to modify the Door Maker plugin.

The textures.txt file contains a list of textures in the order that you want them to appear in the drop down menu. Please note the format of each line. The comma separates the name and the height (inches) that the textures graphic represents. The actual texture file is built up with this name plus _ver.jpg which stands for vertical. Lastly notice that there isn't a white_ver.jpg. If you are adding textures and find that the door is also white – this means that the spelling isn't quite right. If you update this file please put it into gkware_doormaker/config folder.

1. White,36
2. Baltic,36
3. Bamboo,36
4. Brown_oak,36
5. Cherry,36
6. Coffee,36
7. Dark_bamboo,36
8. Euro_maple,36
9. Hickory,36
10. Ind_walnut,36
11. Maple,36
12. Oak,36
13. Pine,36
14. Red_oak,36
15. Silver_oak,36
16. Spruce,36
17. Walnut,36
18. Zebra,36

If you have several versions of Sketchup then you can have one copy of the gkware_doormaker in a location of your choosing. All you need to do is to place a simple file in each version's plugins folder which is named loader.rb by convention and has the following 2 lines where the second line is a folder of your choosing and where you will unzip the gkware_doormaker_vx.x.xx.rbz file (where x.x.xx is the version number).

Loader.rb

1. require 'sketchup.rb'
2. require_all('C:/Users/Public/Documents/Sketchup')

17 Files and File Locations

The Door Maker Plugin has the following files:

NOTE: The following Sketchup folder is either plugins or if you are using loader.rb then it is the name of your shared folder.

1. Sketchup
 1. gkware_doormaker.rb
2. Sketchup/gkware_doormaker
 1. doormaker.pdf
 2. addprofile_lg.png
 3. addprofile_sm.png
 4. cursor_door.png
 5. doormaker_sm.png
 6. doormaker_lg.png
 7. gkware_doormaker_loader.rb
 8. door_defaults.rbs
 9. door_gui.rbs
 10. doormaker.rbs
 11. doormakerlib.rbs
 12. license_3.rbs
 13. utils_3.rbs
 14. Door Profiles.skp
 15. config.txt
 16. defaults.txt
 17. textures.txt
3. Sketchup/gkware_doormaker/config
 1. readme.txt
 2. license.dat
 3. config.txt
 4. defaults.txt
 5. textures.txt
4. Sketchup/gkware_doormaker/panel profiles
 1. Cove Large.txt
 2. Cove.txt
 3. Ogee.txt
 4. Slant.txt
 5. Tight.txt
 6. ...
5. Sketchup/gkware_doormaker/stile profiles
 1. Cove Large.txt
 2. Full Bead.txt
 3. Half Bead.txt
 4. Ogee.txt
 5. Portland.txt

6. Slant.txt
7. ...
6. Sketchup/gkware_doormaker/front edge profiles
 1. 3mm Roundover.txt
 2. 6mm Roundover.txt
 3. Bead.txt
 4. Chamfer.txt
 5. Cove.txt
 6. ...
7. Sketchup/gkware_doormaker/back edge profiles
 1. 3mm Roundover.txt
 2. 10mm Rabbet.txt
 3. ...
8. Sketchup/gkware_doormaker/handles
 1. 96 mm Flat Bar Pull.skp
 2. 96 mm Wire Pull.skp
 3. 128 mm Bar Pull.skp
 4. 196 mm Bar Pull.skp
 5. Round Knob.skp
 6. Schlage Modern Handle Left.skp
 7. Schlage Modern Handle Right.skp
 8. ...
9. Sketchup/gkware_doormaker/mitered profiles
 1. Crown.txt
 2. Simple.txt
 3. ...
10. Sketchup/gkware_doormaker/translations
 1. en.lang
 2. es.lang
 3. fr.lang
 4. ge.lang
 5. it.lang
 6. ru.lang
 7. zh.lang
 8. zh_cn.lang
 9. ...
11. Sketchup/gkware_doormaker/named defaults
 1. ...

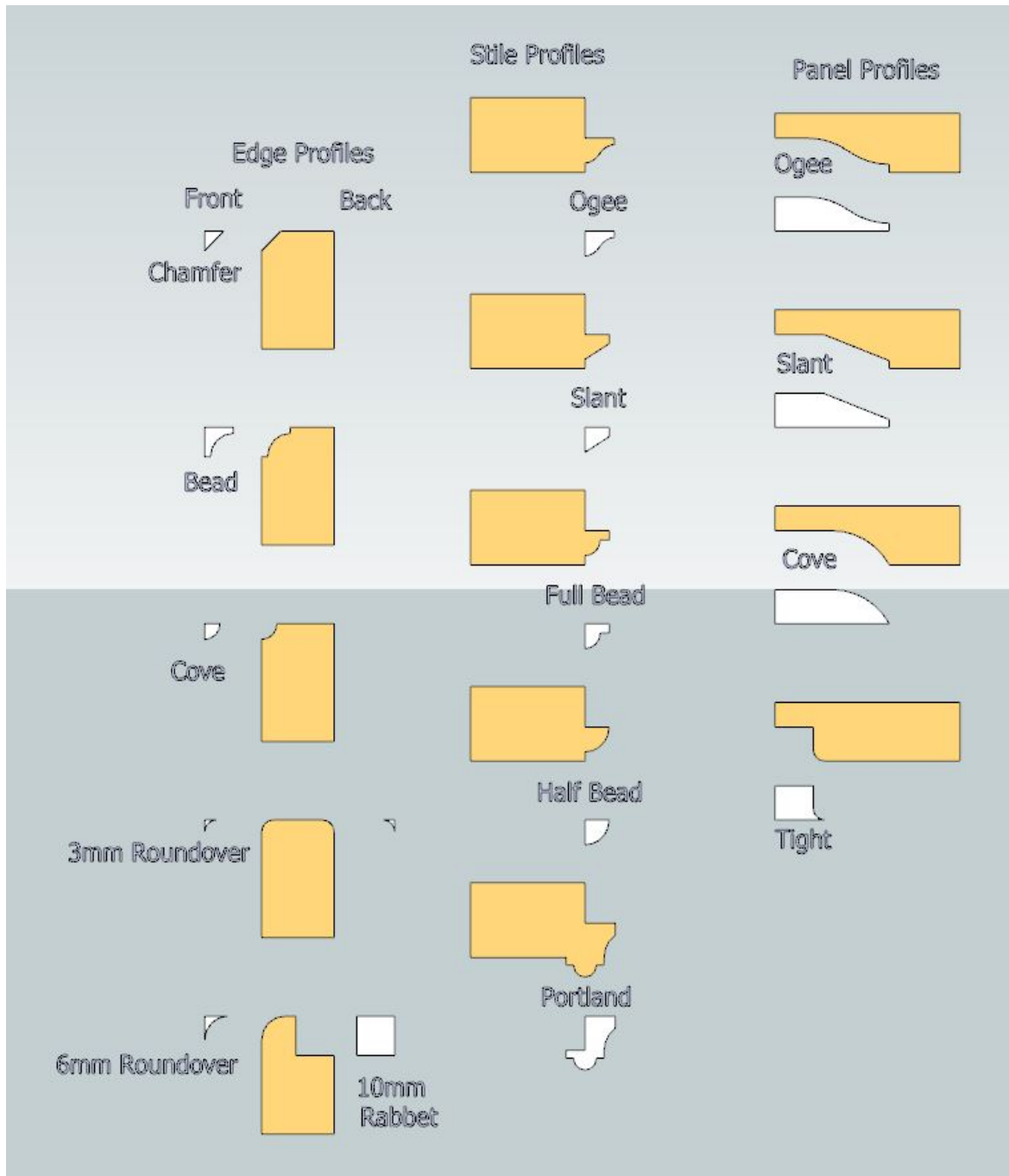
12. Sketchup/gkware_doormaker/images

1. baltic_ver.jpg
2. bamboo_ver.jpg
3. brown_oak_ver.jpg
4. cherry_ver.jpg
5. coffee_ver.jpg
6. dark_bamboo_ver.jpg
7. euro_maple_ver.jpg
8. hickory_ver.jpg
9. ind_walnut_ver.jpg
10. maple_ver.jpg
11. oak_ver.jpg
12. pine_ver.jpg
13. red_oak_ver.jpg
14. silver_oak_ver.jpg
15. spruce_ver.jpg
16. stainless_steel_ver.jpg
17. walnut_ver.jpg
18. zebra_ver.jpg
19. glass.png
20. mirror.png

18 Adding Profiles

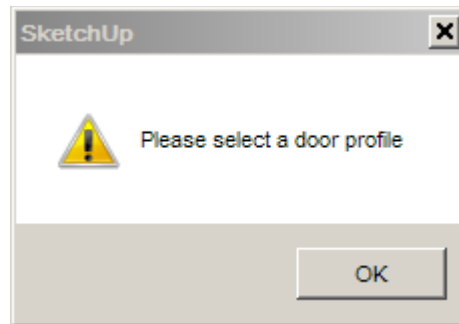
Start up Sketchup and open “Door Profiles.skp”. Create a new profile just like examples. Keep the geometry reasonably simple, Arcs should have between 3 and 5 segments and lines should go end to end and not be divided.

Select the face of the one profile (white face) that you want to save and Click the “Add Door Profiles” button.



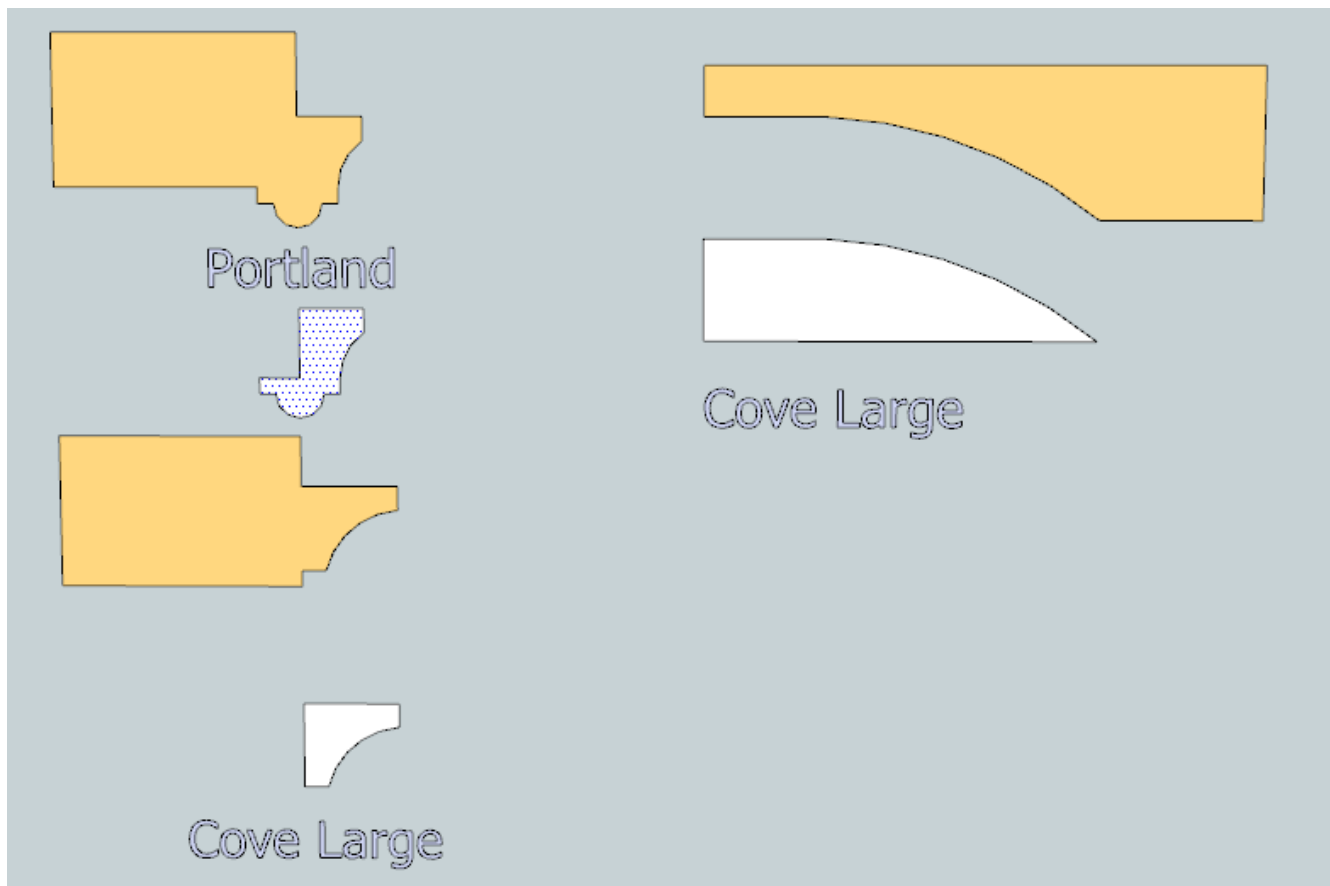
Add Door Profile

If you don't select exactly one profile face and you invoke "Add Door Profile" you will see this message.



Selecting a Profile

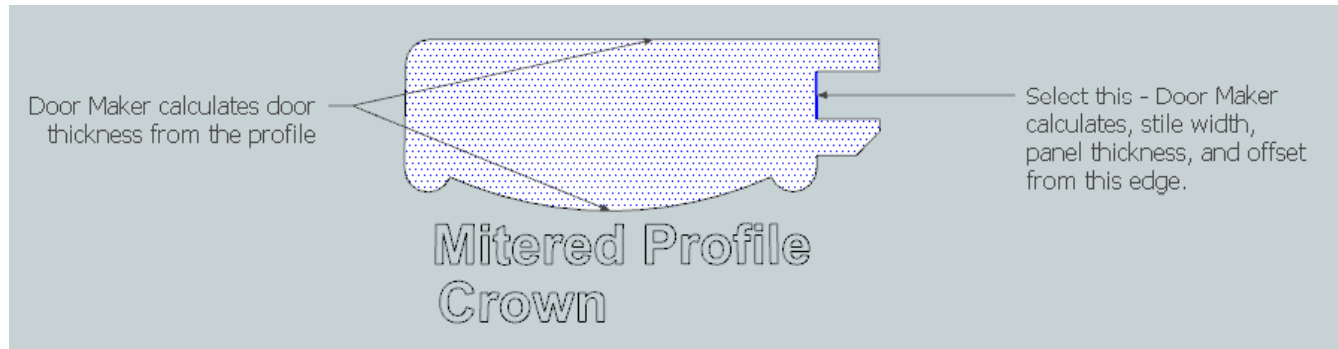
The proper way is to select just the face. Here we have selected the "Portland" profile.



Selecting a Mitered Profile

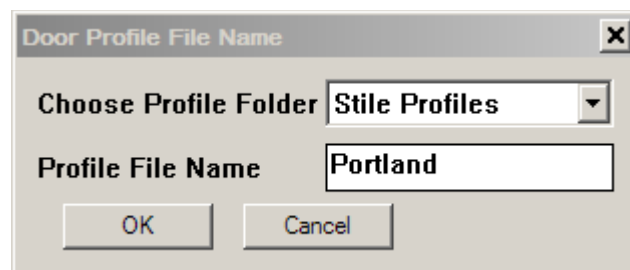
All mitered profiles store “Door Thickness” with the profile. Additionally there is an optional way to select an edge. Then the “Mitered Profile” will also store “Stile Width”, “Panel Thickness” and an offset value for proper panel sizing and placement. In this case the “Panel Profile”, “Stile Width” and “Panel Thickness” are disabled and set from these values.

This shows a selected “Mitered Profile” along with a single edge.



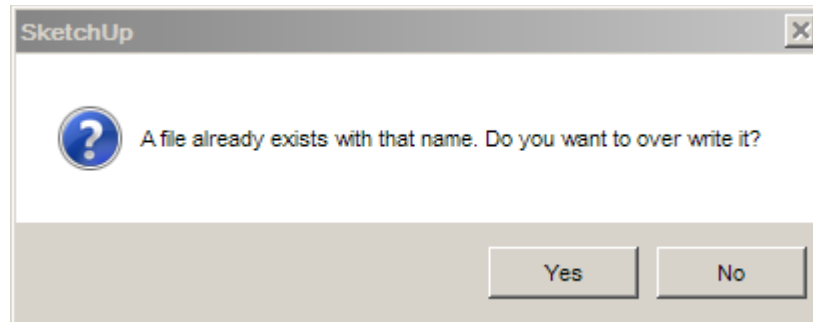
Naming a Profile

The next step is to pick the type of profile you want to save and to name the profile. There are 4 corresponding profile folders and each one relates to one of the four profile types. These are “Panel Profiles”, “Stile Profiles”, “Front Edge Profiles” and “Back Edge Profiles”. For this example we want “Stile Profiles”.



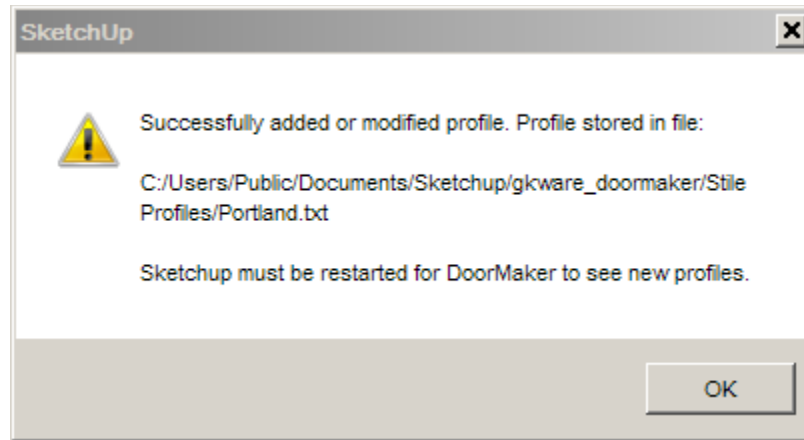
Saving a Profile

Since “Portland” already exists you will get the opportunity to replace it and you will see this message. You should probably choose “No”, go through these steps again and give the profile a different name. If you overwrite an existing supplied profile then you will lose your changes next time you update your Door Maker plugin.



Restart after Saving a Profile

Once the profile has been saved you will see a message like this. Please note that you must restart Sketchup before you will see the new profile in the drop down list. You can add as many profiles as you wish and you only need to restart sketchup when you want to see the new profiles in one of the lists.



19 Version History

Version 1.0.39 – Jan 2, 2015

1. Input Form was getting to tall for Gold version. Added new tab for Gold version and moved some inputs to new tab.
2. Moved “Language”, “Debug” and “Force Silhouettes Off” from input form to “Door Maker - Edit Config”.

Version 1.0.38 – Dec 23, 2014

1. Added Config file editor. You can now edit a number of fields without having to find the files on your hard drive.
2. Added extra space field which allows yo to pad the input form with more space.
3. Added small_font field which you can turn on / off.
4. Modified the menu option "Door Maker - Check License". It now brings up your userid and password which may need to be changed.

Version 1.0.37 – Dec 20, 2014

1. Fixed Astragal bug with Swing Layer. Wasn't allowing space for Astragal.

Version 1.0.36 – Dec 17, 2014

1. Added door jambs and half jambs for passage doors and bifolds.
2. Added Swing Layer for 2D house plans.
3. Added pivot point for passage doors and astragals for double doors.
4. Re organized door maker input form.
5. Added Top Rail Height.
6. Added a number of new fields to support door jambs.
7. Dropped "Schlage Modern Handle Left" and changed the name of "Schlage Modern Handle Right" to "Schlage Modern". Door maker now flips RH handles for LH doors.
8. Finished dynamic movement for bifold doors.
9. You can now have 0 to 3 mullions for square panel sections.

Version 1.0.34 – Oct 9, 2014

1. Added Mitered Profile feature. Users can now create mitered frame doors.
2. Supplied “Open Styles” wasn't working with translations. Fixed.

Version 1.0.33 – Sep 6, 2014

1. Changed the web dialog - the enter key now acts like the OK button.
2. Fixed first time registration bug.
3. 'Plain Panel' door shape now disables several irrelevant fields.
4. Added 'Wood Grain' drop down – you can now modify grain direction for door panels.
5. Added 'Second Handle' check box. Great for passage doors where you want a handle on both sides of the door.
6. Added 'Half Width Stile' drop down. Great for bi-fold doors where you want 1 of the stiles half the width.
7. Added 'Open Style Sheet' drop down. You can now store and retrieve style sheets.
8. Changed 'Save As Default' check box to 'Save Style Sheet' drop down. You can now save current style as a named style sheet.

Version 1.0.32 – Aug 3, 2014

1. Updated documentation.
2. Fixed translation issues. English, French and Traditional Chinese are completed. The other language files are not complete.
3. Better sizing of web dialog input form.
4. Added “Center Shaker Panel” and “Debug” option to the Pro version web dialog.

Version 1.0.31 – Jul 24, 2014

1. Packaged incorrect rbs file. Fixed

Version 1.0.30 - Jul 17, 2014

1. Re-factor common code used by Door Maker and Stair Maker.
2. All utilities now under license. License is checked once per session and by first utility that is run.

Version 1.0.29 - Jun 11, 2014

1. Changing “Handle Location” now automatically changes “Click Action”. You may override “Click Action” if you wish.
2. Broke “Tool Option” in version 1.0.28. All selections acted as if “One Click” was chosen. Fixed.

Version 1.0.28 - Jun 7, 2014

1. Change the input box to a web dialog.
2. Removed “Interact Value”
3. Added “Click Action”, “Hinge Angle” and “Pullout Depth” to the web dialog.
4. Click Action is now independent of handle. Added Hinge Top and Hinge Bottom to the Click Action.

Version 1.0.27 - Jun 4, 2014

1. Added Interaction to Pro version. Doors now open / close based on user supplied hinge angle – defaults to 120 degrees. All Doors and Drawer fronts that have a center mounted handle have pull interaction based on user supplied value.

Version 1.0.26 - May 13, 2014

1. Dragging a door with ht of 0 produced errors. Door maker now handles this gracefully.

Version 1.0.25 - Apr 19, 2014

1. Licensed user had to be connected to internet. Now Licensed user is checked every 5 to 10 days. There is also a Check license choice which will check license now guaranteeing at least 5 days before the next check. This is useful if you plan on being off line for extended periods of time.
2. Some unnecessary checks were being performed if you choose only free version. Fixed.

Version 1.0.24 - Apr 14, 2014

1. Modified web connection to use Ajax to support OSX Lion.

Version 1.0.23 - Apr 11, 2014

1. Door handle positions top center and bottom center were not correct for plain panels. Fixed.
2. SU 2013 and SU 2014 had date time issues with licensing. Fixed.

Version 1.0.22 - Mar 30, 2014

1. If you drag with "one click" there was a line which was confusing. Fixed.
2. The stile profile is now a separate moulding and no longer part of the panel. This is so that glass and mirror type doors can have the same look.
3. Added 4 new door shapes for Pro version.
4. Added 1 new door style for Pro version.
5. Added "Save as Default" for Pro version.
6. Added "Add Door Profile" button on tool bar and menu item.
7. Added "Panel Profile" for Pro version. Users can create custom profiles.
8. Added "Stile Profile" for Pro version. Users can create custom profiles.
9. Added "Front Edge Profile" for Pro version. Users can create custom profiles.
10. Added "Back Edge Profile" for Pro version. Users can create custom profiles.
11. Added 5 Handle Styles for Pro version. Users can add their own handles.
12. Added Handle Locations for Pro version.
13. Added Handle Offset for Pro version.
14. Added Bottom Rail Width for Pro version.
15. Added Bottom Panel Height for Pro version.

Version 1.0.21 - Mar 08, 2014

1. Fixed regression bug for "one click"
2. Now only require vertical wood grain patterns
3. Wood grain patterns now translated
4. Added Spanish translation file. es.lang

Version 1.0.20 - Mar 05, 2014

1. Fixed "drag", "overlay" and "inset" methods. User can now click any corner and drag diagonally to the opposite corner.
2. Added config folder for user to store custom defaults.txt and or custom textures.txt
3. Added Chinese (simplified) language support.

Version 1.0.19 - Mar 01, 2014

1. Modified version to work with Sketchup 2014

Version 1.0.18 - Feb 27, 2014

1. Added "overlay" and "inset" methods. Use overlay for European cabinets. Use inset for inset doors. Adjust inset for Face Frame cabinets.
2. Added "Translate Parts" option in defaults.txt. You can turn off translation for the parts naming as seen under Window/Outliner

Version 1.0.17 - Feb 20, 2014

1. Make change for Sketchup Extensions warehouse

Version 1.0.16 - Feb 15, 2014

1. Make change for Sketchup Extensions warehouse

Version 1.0.15 - Feb 10, 2014

1. Make change for Sketchup Extensions warehouse

Version 1.0.14 - Feb 08, 2014

1. Major changes to conform to the Sketchup Plugin Store.
2. Dialog cancel did not cancel the door maker plugin. Fixed
3. When creating a few doors and then starting a new model, materials would not show up. Fixed.
4. Changed Undo name from "Undo gkware" to "Undo Door Maker". Fixed
5. Textures would not Undo when undoing a door. Fixed
6. Parts naming was not consistent. Fixed
7. Changed Toolbar name from "GKWare Cabmaker Toolbar" to "GKWare Door Maker"
8. Removed a global variable.